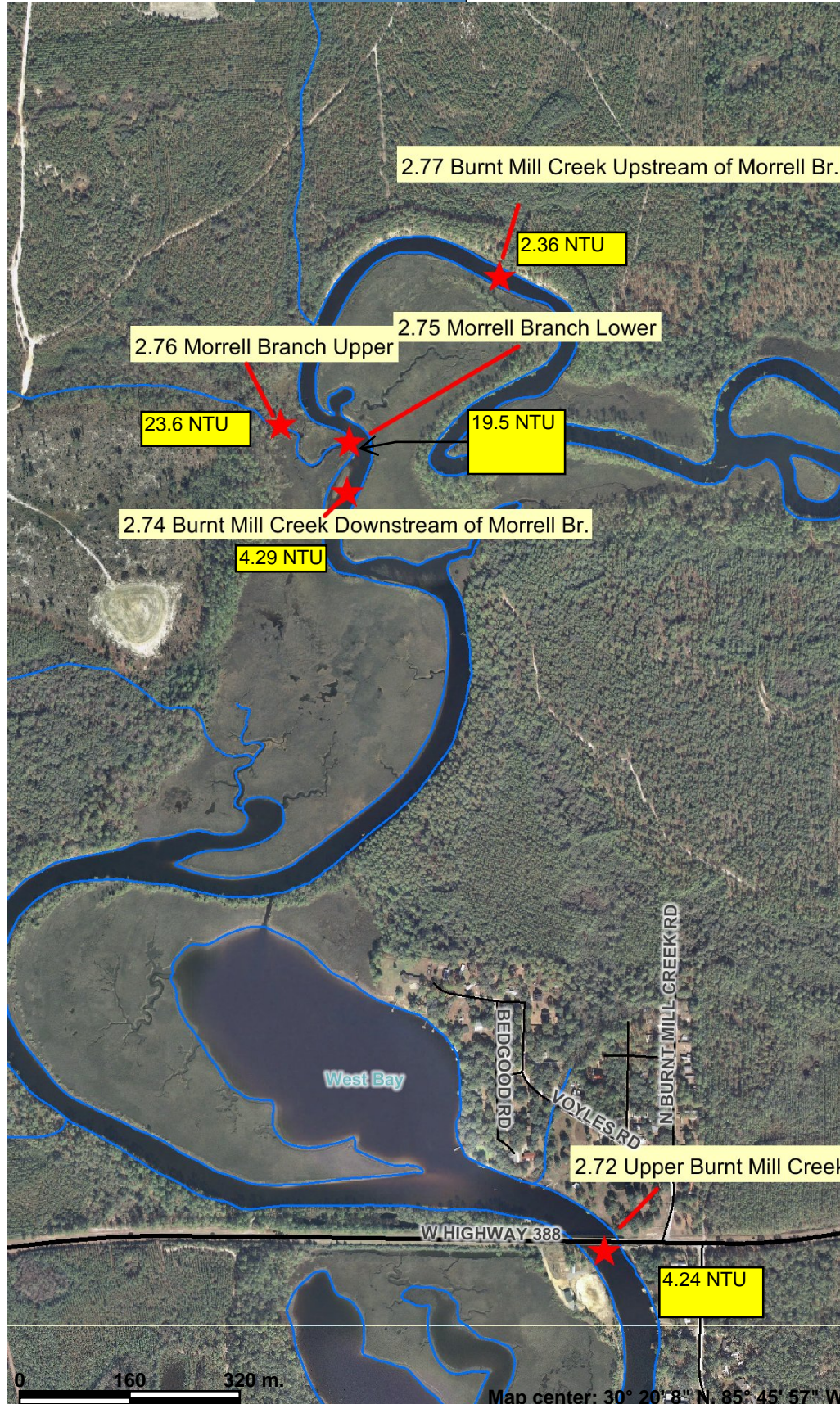




North Burnt Mill Creek Stations



Legend

- Roads**
 - Major Roads
 - Minor Roads
 - Unnamed
 - Trail
 - Highways
- Creeks**
- Aerials**
- City Limits**
 - Callaway
 - Lynn Haven
 - Mexico Beach
 - Panama City
 - Panama City Beach
 - Parker
 - Springfield
- County Gulf**
- Land**
- Saltwater**
- Freshwater**

0 160 320 m.

Map center: 30° 20' 8" N, 85° 45' 57" W



Scale: 1:9,000

This map is a user generated static output from an Internet mapping site and is for general reference only. Data layers that appear on this map may or may not be accurate, current, or otherwise reliable. THIS MAP IS NOT TO BE USED FOR NAVIGATION.

ST ANDREW BAY RESOURCE MANAGEMENT ASSOCIATION

DS-2b (Rev 12/09)

Bay County, Florida
Baywatch/Lakewatch Data Collection Sheet

SECTOR: II - WEST BAY: Burnt Mill Creek	CAPTAIN'S NAME <i>Patrice Couch</i>
Station(s): Morrell Branch and Burnt Mill Creek	

SAMPLER(S): *Laura Paris*

SONDE # (Office) <i>YSI #8</i>	OTHER(S):
--	------------------

DATE <i>4/7/11</i>	AIR TEMP °C <i>28.5</i>	RAIN (Office use) <i>0.80"</i> <small>Pine Log Tower</small>	NOTE: Use reverse side for comments Control Temp °C = <i>N/A</i> <small>Processed in field</small>
------------------------------	-----------------------------------	---	--

SUN CODE: 1=Clear Sky, 2=Thin Haze, 3=Partly Cloudy, 4=Mostly Cloudy, 5= Overcast, 6=Rain
SEA CODE: 1=Smooth, 2=Ripples, 3=Light Chop, 4=Choppy, 5=Few Whitecaps, 6=Many Whitecaps, 7=Rough
WIND DIR.: NE, NNE etc. 0 for calm. | All Temperatures - °C

STATION NO.	2.72	2.74	2.75	2.76	2.77	
U of FL No.	UPPER	NA	NA	NA	NA	NA
STATION NAME	Upper Burnt Mill Creek	Burnt Mill, Downstream of Morrell Branch	Morrell Branch, lower	Morrell Branch, upper	Burnt Mill, Upstream of Morrell Branch	
TIDE (Office use)						
TIME (Military)	<i>1532</i>	<i>1402</i>	<i>1625</i>	<i>1653</i>	<i>1723</i>	
Wind Dir (°)	<i>160</i>	<i>195</i>	<i>195</i>	<i>100</i>	<i>150</i>	
Wind Spd (mph)	<i>5.0</i>	<i>8.0</i>	<i>5.0</i>	<i>3.0</i>	<i>4.0</i>	
SUN (1-6)	<i>1</i>	<i>1</i>	<i>1</i>	<i>1</i>	<i>4</i>	
SEA (1-7)	<i>2</i>	<i>2</i>	<i>2</i>	<i>1</i>	<i>2</i>	
H2O DEPTH (ft)	<i>7.75</i>	<i>6.5</i>	<i>2.5</i>	<i>2.0</i>	<i>5.25</i>	
SECCHI (ft)	<i>3.0</i>	<i>2.75</i>	<i>2.0</i>	<i>1.75</i>	<i>4.0</i>	
H2O TEMP(s) [°C]	<i>21.45</i>	<i>20.95</i>	<i>19.22</i>	<i>19.21</i>	<i>18.84</i>	
H2O TEMP(b) [°C]	<i>22.10</i>	<i>19.34</i>	<i>19.38</i>	 	<i>18.47</i>	
DO(s) [mg/l]	<i>6.80</i>	<i>6.67</i>	<i>7.65</i>	<i>7.56</i>	<i>6.50</i>	
DO(b) [mg/l]	<i>6.78</i>	<i>5.74</i>	 	 	<i>6.07</i>	
TURB(s) [NTU]	<i>4.24</i>	<i>4.29</i>	<i>19.5</i>	<i>23.6</i>	<i>2.36</i>	
TURB(b) [NTU]	<i>5.89</i>	<i>4.10</i>	 	 	<i>3.18</i>	
SAL(s) [ppt]	<i>6.59</i>	<i>1.00</i>	<i>0.33</i>	<i>0.06</i>	<i>0.33</i>	
SAL(b) [ppt]	<i>20.98</i>	<i>2.07</i>	 	 	<i>0.51</i>	
pH(s)	<i>7.02</i>	<i>6.64</i>	7.697	<i>7.18</i>	<i>6.21</i>	
pH(b)	<i>7.87</i>	<i>6.47</i>	 	 	<i>6.22</i>	